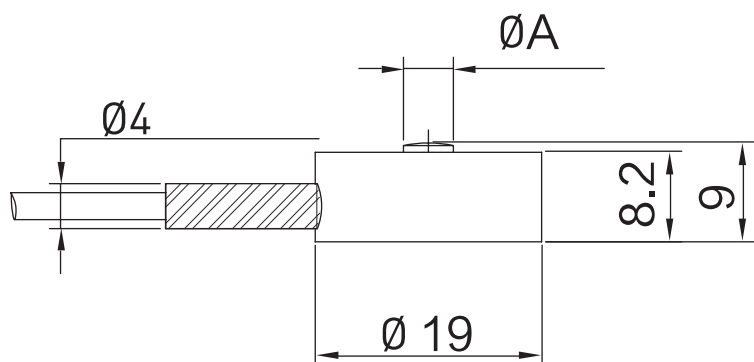

 Size and Capacity



SIZE(mm)	A
CAP (kg)	
5-100	2
150-500	3
1000	5

Capacity: 5~1000 kg



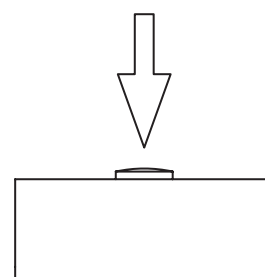
 Features & Applications

- Miniature load cell with metal foil strain gauge technology, made of stainless steel.
- Suitable for force measurement in limited spaces. Widely used for industrial measurement and control, R&D and other applications.

 Technical Parameters

Specifications	Technique
Rated output	1.5±10% mV / V
Zero balance	± 2 % F.S.
Non-linearity	0.5~1 % F.S.
Hysteresis	0.25 % F.S.
Repeatability	0.25% F.S.
Creep (30min)	0.05 % F.S.
Temp.effect on output	0.05 % F.S. / 10°C
Temp.effect on zero	0.05 % F.S. / 10°C
Input impedance	350±10Ω
Output impedance	350±5Ω
Insulation	≥5000MΩ/100VDC
Recommended excitation	5 V
Maximum excitation	10 V
Compensated temp range	- 10 ~ 60 °C
Operation temp range	- 20 ~ 80°C
Safe overload	120% F.S.
Ultimate overload	200 % F.S.
Cable size	Ø3 × 1000 mm
Protection class	IP66
Cable color code	Input: Red(+) Black(-); Output: Green(+) White(-);

 Load Direction



 Schematic Wiring Diagram

